

About the Trainer:

Dr. Alan L. Berman (Lanny)

Dr. Berman retired in 2014 as the Executive Director of the American Association Suicidology. He currently is Adjunct Professor of Psychiatry and Behavioral Sciences the Johns Hopkins University School of Medicine.

Dr. Berman holds a B.A. degree from the Johns Hopkins University and Ph.D. from the Catholic University of America. From 1969 to 1991 he taught at the American University where he attained the rank of tenured full professor. Between 1991 and 2014, Dr. Berman has been a Distinguished Adjunct Professor at AU. In 1991, he was named Director of the newly established National Center for the Study and Prevention of Suicide at the Washington School of Psychiatry, a position he held until accepting his Executive Director position with the AAS.

Dr. Berman maintains a part-time practice of psychological and forensic consultation in Chevy Chase, MD. He has published over 125 professional articles and book chapters.

Dr. Berman appears frequently on both national and local media. He has appeared on The Today Show, Good Morning America, Hour Magazine, and The Larry King Show.

He has testified on Capital Hill three times: on suicide among Vietnam combat veterans, on teenage suicide, and on the U.S.S. Iowa explosion. In 1996, he was appointed Consultant to the Office of the Independent Counsel to investigate and finalize their report on the 1993 death of White House Counsel Vincent Foster, Jr.

He served on the HHS Federal Task Force on Youth Suicide Prevention, was an initiating member of the Centers for Disease Control sponsored "Working Group: on the operational criteria for the classification of suicide and the NIMH sponsored conference on developing a nomenclature for suicide morbidity. Further, Dr. Berman has served on three Task Forces of the National Action Alliance for Suicide Prevention and was appointed to the Action Alliance's Executive Committee in 2013.

Dr. Berman frequently is asked to serve as an expert witness in legal cases involving suicide malpractice and wrongful death and has a national reputation as a teacher and professional workshop leader on topics of clinical suicidology and suicide prevention. In 2009, he was Board Certified in Forensic Suicidology by the AAS. In 2009-2010, Dr. Berman was one of only seven civilians to receive a Congressional appointment to the Department of Defense Task Force on the Prevention of Suicide among Members of the Armed Forces.

He has edited many books and papers. His latest book, co-edited with Maurizio Pompili, MD, (7) Medical Conditions Associated with Suicide Risk, was published in April, 2011.

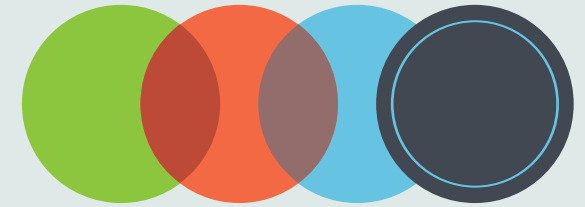
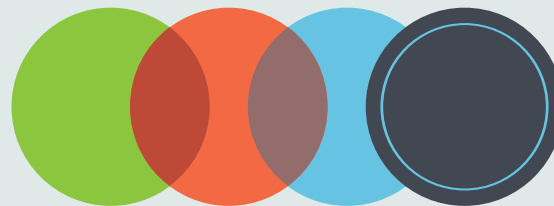
If you have any questions regarding this training, please contact the:

Mercer County Behavioral Health Commission, Inc.

8406 Sharon-Mercer Road, Mercer, PA 16137

*Phone: 724-662-1550
Fax: 724-662-1557*

*Or email at :
tracy.bornick@mcbhc.org*



Mercer County Behavioral Health Commission invites you to attend:

Suicide Prevention Training

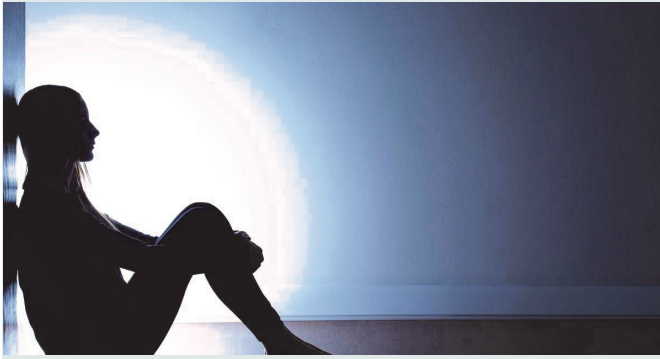


Wednesday, May 23, 2018
Registration: 8:00
Training: 8:30 a.m. to 4:00 p.m.

This Training will be held at :

**Hermitage VFW
5550 E. State St.
Hermitage, PA 16148**

SUICIDE PREVENTION TRAINING



**Wednesday,
May 23, 2018
9:00 a.m. to 4:00 p.m.**

Fee:

**\$20.00 per person
buffet lunch included**

This training will be held at the:

**Hermitage VFW
5550 E. State St.
Hermitage, PA 16148**

COURSE OUTLINE

Session 1. Assessment and Formulation of Suicide Risk

1. Understanding and differentiating suicide risk assessment from suicide risk formulation
2. Risk Factors for Suicide: Chronic, Acute, Contributory, Precipitating
3. Do Protective Factors really matter?
4. Suicide Risk Assessment: In the context of denied suicide ideation
5. Models for suicide risk formulation
6. Case Exercise

Session II. Treatment and Safety Planning

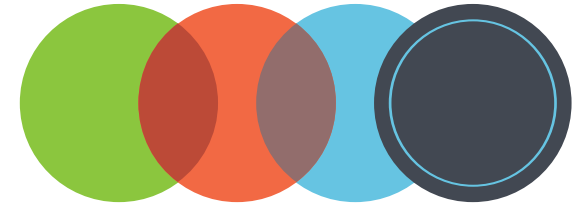
1. Relation between suicide risk formulation and treatment planning
2. Treatment planning by setting
3. The figment call imminent risk
4. Informed consent
5. Confidentiality issues
6. Hospitalization decisions: Voluntary and involuntary
7. Discharge planning and continuity of care

Session III. Mental health suicide prevention interventions

1. Relation between suicide risk formulation and treatment planning
2. Integrating mental health interventions into a public health suicide prevention model
3. Evidence-based treatments
4. Comprehensive, integrated mental health systems interventions

Session IV. Risk Management—Meeting the Standard of Care

1. The standard of care
2. Most common acts of omission and commission
3. The competent clinician



Register on-line at:
www.mercercountybhc.org

